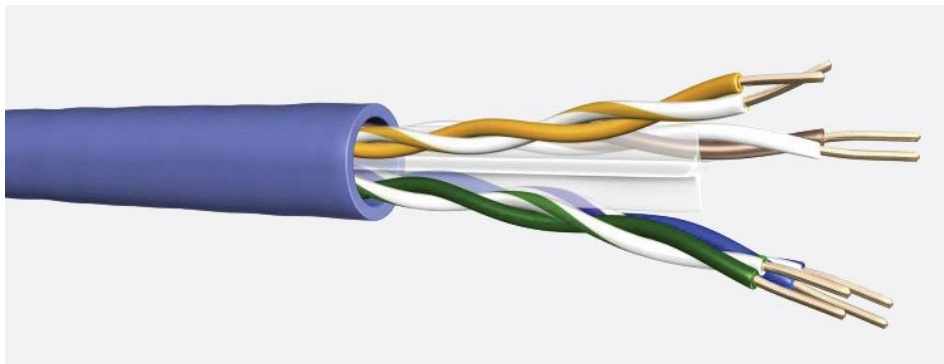


CAT6 U/UTP LSOH VIOLET

Transferring High Speed data across your home or building



CAT6 U/UTP 4 PAIR VIOLET CABLE DESCRIPTION

CAT cables are Ethernet cables that are designed to work with broadband and telephone connections. CAT5E and CAT6 cables handle speeds up to 100 Mbps. CAT 6 cables can handle speeds of up to 10 Gbps, which is why they're often used in data centres.

CONDUCTOR:	Bare Copper (Solid Class 1)
AWG:	24 American Wire Gage (0.25mm ²)
INSULATION:	High Density Polyethylene (HDPE)
NUMBER OF PAIRS:	4
PAIR IDENTIFICATION:	White/Blue, White/Orange, White/Green, White/Brown,
SHEATH MATERIAL:	Low Smoke Zero Halogen (LSOH)
OVERALL DIAMETER:	6.2 ± 0.2mm Bend Radius : Fixed 4 x OD Flexing 8 x OD
TEMPERATURE RATING:	Fixed -20°C to 60°C Flexing -10°C to 60°C
WEIGHT:	46 kg/km
FLAME RETARDANT:	BS EN 60332-1-2
HALOGEN GAS EMISSION:	BS EN 60754-1&2
RoHS3 COMPLIANCE:	YES
CE COMPLIANT:	LVD (2014/35/EU), CPR (305/2011)
LOW SMOKE GENERATION APPROVAL:	BS EN 61034-2
CPR CLASSIFICATION:	Dca-s2-d2-a1

MAX. CONDUCTOR RESISTANCE @ 20 °C	≤ 9.38 Ω/100m Max.
RESISTANCE UNBALANCED:	≤ 2.5 % Nominal Impedance (1-100MHz) : 100 ± 15 Ω
MUTUAL CAPACITANCE:	≤ 5.6nF/100m
CAPACITANCE UNBALANCED TO EARTH:	≤ 330 pF/ 100m
MAX. DELAY SKEW:	≤ 45 nS/ 100m
VOLTAGE RATING EN 50525-1 :	450/750V*
TEST VOLTAGE:	2.5kV (AC)

**Suitable for installation where Band II 450/750v cables are present. Not suitable for connection to mains supply Physical Characteristics*

*U/UTP= Unscreened Cable

*U/FTP= Unscreened Overall/ Foil Screened Pairs

*F/UTP= Overall Foil Screened/ Unscreened Pairs

*F/FTP= Overall Foil Screened/ Foil Screened Pairs

*SF/FTP= Overall Braid & Foil Screened, Foil Screened Pairs